

Time
Talent
Treasure

Stewardship -- A Way of Life

*Holy Infant
Catholic Church*

July 1, 2004 – June 30, 2005

Holy Infant Vision Statement

Together, through the grace of the Holy Spirit we “Live Jesus,” reaching out, embracing all with compassion, humility and gentleness.

Open Hearts  Open Hands  Open Minds

Holy Infant Mission Statement

The Mission of the people of Holy Infant Catholic Church is:

- ❖ to celebrate the presence of God in our midst and in our liturgy;
- ❖ to spread the Good News of Jesus Christ;
- ❖ to welcome all people and encourage their participation in our parish life;
- ❖ to build our community of faith through a strong spirituality and commitment to hospitality, faith formation, stewardship and long range planning;
- ❖ to minister to the needs of God’s people through inclusion and outreach.

We commit ourselves to do all things in the spirit of St. Francis de Sales with compassion, humility and gentleness.

Salesian Spirituality

The Diocese of Raleigh has entrusted Holy Infant Catholic Church to the care of the Oblates of St. Francis de Sales, men who seek to live Salesian spirituality. Salesian spirituality, based on the spirit and doctrine of St. Francis de Sales, is an unpretentious, down-to-earth path to God that is available to all. A Doctor of the Church, St. Francis de Sales believed that holiness is not simply the province of priests and religious, or others who retreat to monasteries or the desert, but is achievable by all people who embrace the duties and responsibilities of their vocations. Mothers, fathers, children, doctors, scientists, waiters, salespeople, CEOs—all are called to holiness. Francis taught that doing the ordinary things of life in an extraordinary way—that is, with great love—leads us closer to God. Through the practice of humility, gentleness, patience and other similar “little virtues” we can “live Jesus” and create miracles in our own lives and in our families, our work, and our church.

Direction of Intention

We urge all parishioners to consider beginning each day with St. Francis’ Direction of Intention:

My God, I give you this day. I offer you now all the good that I shall do and I promise to accept, for love of you, all the difficulty that I shall meet. Help me to conduct myself during this day in a manner pleasing to you.

May we also suggest that at the end of the day each parishioner review the happenings of the day, thanking God for what was done well and accepting, in humility, responsibility for those areas that need more attention.

Dear Parishioners,

Another year has come and gone! It is time to present you with the July 2004-June 2005 edition of "Time, Talent, Treasure: Stewardship—A Way of Life." I hope that each of you will take a little time to read through this important document. It will provide an overview of the demographics of Holy Infant parish for this past fiscal year, as well as data concerning our rich sacramental life. You will also find a complete picture of our financial life. You will be impressed as I am, by the ways in which you have contributed so generously of your time and your talent to the many liturgical, governance and social committees that enhance our parish life together. You have reached deep into your hearts as well as your pocketbooks to provide for the many financial needs of our parish, diocese and community. Much has been done and we are very grateful. More is needed and we are very hopeful.

This year we implemented HI-life, an intergenerational faith development process. We are one of the parishes chosen to develop this new and significant catechetical approach. As with any new process, success has not always been easy. We have had our share of stops and starts. Still, we have learned much from these early efforts. Through HI-life, we are realizing that our faith journey is a life-long process. All of us --from the young and energetic to the mature and wise--have something to offer one another as we grow in faith together. I encourage every one to participate fully in this process during the year ahead. I know that the Lord will bless you for your whole-hearted participation and will deepen your faith life and that of your entire family.

God has blessed all of us in many ways during this past year. As the pastor of Holy Infant Parish, I have been especially blessed by each of you. It has been my privilege to minister with such warm-hearted and generous people! I look forward to continuing our faith journey together in the year ahead.



Fr. John McGee, OSFS
Pastor

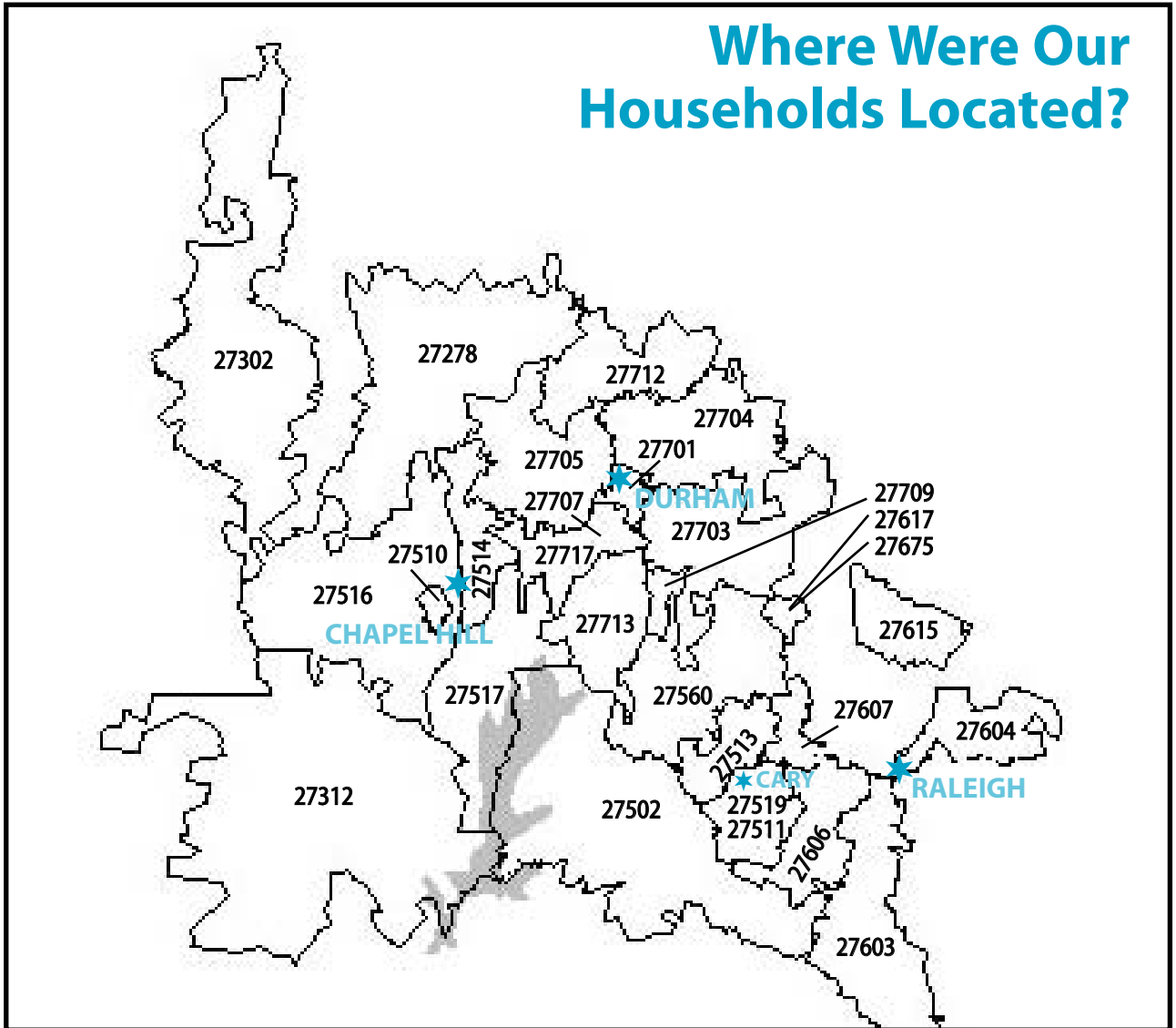
In a collaborative effort with Fr. John, the Parish Pastoral Council presents its research as to who we are as a parish along with our vision of Holy Infant's future as a Christian community. We hope you will find this report interesting and informative.



Keith Anthony
Parish Pastoral Council Chair

Demographics

Where Were Our Households Located?



Households by City

Apex	4	Hillsborough	6
Carrboro	2	Mebane	3
Cary	13	Morrisville	4
Chapel Hill	76	Pittsboro	5
Clarksville	1	Raleigh	10
Durham	662	Roxboro	1
		TOTAL	787

Demographics

Zip Code Analysis

Zip Code	# of Households	Zip Code	# of Households	Zip Code	# of Households
23927	1	27517	45	27675	1
27278	6	27519	7	27701	3
27302	3	27523	3	27703	20
27312	5	27560	4	27704	1
27502	1	27574	1	27705	32
27510	2	27603	1	27707	139
27511	1	27604	1	27709	1
27513	5	27606	1	27712	9
27514	16	27607	1	27713	456
27516	15	27615	1	27717	1
		27617	4	TOTAL	787

How Did Our Households Change?

As you are aware, the Research Triangle Park is a very transient area. Because of this, our parish registration figures vary significantly from year to year. The number of registered households changes due to marriages, deaths, relocation, and for some, a simple change in parishes.

During this past fiscal year, 122 new households moved into the parish which represents 15.5 % of registered households. 82 households left our parish, representing 10.4%.

As the Triangle area continues to expand, so will our Holy Infant community. Growth brings blessings as well as new demands on parish facilities, personnel, program requests, and other desires which we are called to meet.

Who Made Up Our Parish Households?

Males	888	Male adults	596	Male children	292
Females	1,014	Female adults	741	Female children	273
*Total	1,902	*Total	1,337	*Total	565

*An adult is a person age 18 and older.
A child is a person from birth thru 17.*

Statistics

How Old Were We?

<u>Age</u>	<u>Number</u>	<u>%</u>	<u>Age</u>	<u>Number</u>	<u>%</u>
0-5	225	11.8%	41-50	323	17.0%
6-10	137	7.2%	51-60	268	14.1%
11-17	203	10.7%	61-70	132	6.9%
18-25	52	2.7%	71-80	75	3.9%
26-30	127	6.7%	81-90	24	1.3%
31-40	335	17.6%	91-100	1	.1%
0-5 year olds		11.8%	18-60 year olds		58.1%
6-17 year olds		17.9%	61+ year olds		12.2%

What Was Our Marital Status?

Age 18 and over

	<u>%</u>	<u>Total</u>	<u>Male</u>	<u>Female</u>
Married	79.1	1058	516	542
Single	11.1	149	54	95
Divorced	4.2	56	10	46
Separated	1.3	17	6	11
Widowed	4.3	57	10	47

What Sacraments Did We Receive?

	<u>Total</u>	<u>Adult</u>	<u>Children</u>	
Baptism	32	0	32	
First Reconciliation	23	1	22	
First Eucharist	23	1	22	
Confirmation	16	2	14	
	<u>Total</u>	<u>Catholic</u>	<u>Interfaith</u>	<u>Convalidation</u>
Marriages	5	2	2	1
Funerals	7			

What Catholic Schools Did Our Children Attend?

(Academic Year August 2004 – June 2005)

	<u>Immaculata</u>	<u>*St. Thomas More</u>	<u>Cardinal Gibbons</u>
Households	17	4	9
Students	18	6	9

*No financial agreements are in effect with St. Thomas More and St. Michael Schools.

Our parish's financial support for these students:

\$450 per student per year attending Immaculata School, Durham

\$1,000 per student per year attending Cardinal Gibbons High School, Raleigh

Total Financial Support: \$17,100.00

Statistics

What Was Our Faith Development Enrollment?

<u>Children</u>	<u>Adults</u>
Children 5 and Under 26	Young Adults 27
Children 6 - 10 79	Adults 35 - 49 158
Children 11 - 13 45	Adults 50 - 65 80
Children 14 - 19 60	Seniors 16
Total Children: 210	
Total Adults: 281	
Total Households: 172	

TYM Youth Time Talent & Treasure Contributions

The TYM youth served as lectors, altar attendants, music ministers, confirmation sponsors and, as part of the confirmation preparation, accompanied Eucharistic ministers to the sick during a weekend visit. Thirteen youth participated in "Make a Difference Day" at Holy Infant by helping collect and distribute duffle bags for children living in foster homes. TYM youth spent 3 Saturday mornings sorting food at the Food Bank in Raleigh. These Holy Infant youth bagged 1,500 lbs of sweet potatoes, and sorted 4,500 lbs of canned/package food. TYM youth helped serve dinner at the Urban Ministries kitchen on the third Sunday of each month, participated in the CROP Walk, and through admission to various TYM activities, also collected 125 cans of food and \$46 to help feed the needy. Nine dedicated youth attended a week-long Catholic HEARTwork camp helping those in need with home repair and daycare. Also fifteen youth offered a free babysitting service to parish families in early December. The TYM youth are an active and vibrant part of our parish community and their contributions are greatly appreciated.

What Were Our Adult and Intergenerational Faith Development Programs?

Baptism Preparation	5 Sessions
First Eucharist Preparation	5 Sessions
First Reconciliation Preparation	3 Sessions
Confirmation Preparation (<i>Sponsors included</i>)	6 Sessions
Rite of Christian Initiation of Adults (<i>RCIA</i>)	ongoing year round
Spiritual Book Club	2 Groups
Catechist Formation	7 Sessions
"Liturgy & Sacraments" Series	4 Sessions
Intergenerational Events	18 Events
Special Events (<i>Women's Day of Reflection</i>)	1 Retreat

Holy Infant Participation in Diocesan and Deanery Events

Emmanuel Conference, RCIA training workshops, leadership formation for youth ministry, Diocesan Charismatic Conference, Generations of Faith Training workshops.

Time and Talent

In Which Ministries Did Our Parishioners Participate?

Councils

Parish Pastoral Council	20
Parish Finance Council	7

Weekend Collections

Collection Counters	23
---------------------------	----

Stewardship Commission

BAA (Bishops Annual Appeal)	1
Hospitality Committee	30
Office Volunteers	7
Welcoming New Parishioners	2

Faith Development Commission

HI-life Faith Development

HI-life Design Team	7
HI-life GIFT Team	46
HI-life Support Services Team	51

Faith Development of Adults

Adult Learning Opportunities	2
Young Adult Ministry	2

Faith Development of Youth & Children

Faith Development of Youth – TYM (high school)	9
Faith Development of Youth – JYM (middle school)	8
Faith Development of Children	31

Sacrament Preparation

Baptism Preparation	1
First Reconciliation Preparation	4
First Eucharist Preparation	6
Confirmation Preparation	4
Rite of Christian Initiation of Adults (RCIA)	11
Marriage Preparation - Sponsor Couples	16

Liturgical Commission

Liturgical Ministry Scheduling Coordinators	2
Liturgy Action Committee	5
Art and Environment	8
Altar Attendants	16
Altar Bread Bakers	40
Altar Linen Caretakers	15
Eucharistic Ministers to the Sick/Homebound	17
Eucharistic Ministers of the Table	51
Greeters	43
Hosts	14
Lectors	32
Music Ministry	32

Peace, Justice, and Human Concerns Commission

Crop Walk	9
Food Pantry Coordinators	2
Habitat for Humanity	31
Meals On Wheels	30
Respect Life Coordinator	1
Share Your Christmas Committee	73
Urban Ministries of Durham Dinners	178

Parish Life Commission

Funeral Reception Committee	59
Mother's Morning Out	14
Nursery Co-op	6

Prayer Life

Centering Prayer Group	7
Children of Light Prayer Group	12
Prayer Network	51
Servants of God Prayer Group	5

Facilities Commission

Maintenance Committee	7
Space Committee	20

Note: Parishioners were counted more than once in Ministry totals if they were involved in more than one Ministry.

Ministry Positions Filled by Parishioners: 1,068
Households Involved in Ministries: 389

Parish Financial Summary

The following pages describe the financial dimension of our parish – Holy Infant’s treasure. We hope that this summary will provide you with a meaningful understanding of what we have accomplished, and the challenges that we face in the new fiscal year.

Once again, we thank you for your support during the past fiscal year. We are pleased to announce that our operating revenues enabled us to meet our basic budgeted expenses. Your generosity is much appreciated.

This past January we implemented an Electronic Funds Transfer (EFT) program, in order to facilitate regular contributions to the weekly offertory and other scheduled collections. The initial response to the program indicates that it has been well received by our parishioners. The EFT plan offers a simple, time saving service which allows for your stewardship commitment to be planned and fulfilled on a consistent basis—even when you are away for vacation or other reasons. **If you are not participating, we ask that you consider enrollment in this program. This publication contains an insert on Electronic Funds Transfer (EFT).**

The projected expenses for 2005-2006 reflect a 5% increase over the prior year’s operating budget. We believe that the increase fairly represents our ongoing efforts to control expenses, especially in light of continued increases in costs for utilities, property and medical insurance, and contract services.

Additionally, we will be incurring significant expenditures related to the improvement of our existing facilities that are necessitated out of concern for security and safety issues. These projects will include installation of new security doors for all entrances/exits, alarm system upgrades, outdoor lighting enhancements, and landscaping modifications. The cost of these improvements will largely deplete our reserves for capital improvements.

Accordingly, we ask that you prayerfully consider increasing your regular weekly contributions to enable us to meet our expected operating expenses, as well as these special expenditures. Any offertory contributions in excess of our budgeted expenses will be used to restore our capital improvement fund to allow us to provide for future costs associated with improvements to buildings, furnishings, equipment, and grounds.



Blaine Short - Parish Finance Council Chair

Tithing -- Weekly Contributions

Below is a table to help you consider your weekly offertory. What are you currently giving? Can you take another step forward toward full biblical tithing this year?

Yearly Household Income	Lower Range Giving		Mid Range Giving		Upper Range Giving		Biblical Tithe	
	1%	2%	3%	4%	5%	6%	7%	10%
\$10,000	\$2	\$4	\$6	\$8	\$10	\$12	\$14	\$20
\$20,000	\$4	\$8	\$12	\$16	\$19	\$23	\$27	\$38
\$30,000	\$6	\$12	\$17	\$23	\$29	\$35	\$41	\$58
\$40,000	\$8	\$15	\$23	\$31	\$38	\$46	\$54	\$76
\$50,000	\$10	\$19	\$29	\$38	\$48	\$58	\$68	\$96
\$60,000	\$12	\$23	\$35	\$46	\$58	\$69	\$81	\$116
\$70,000	\$13	\$27	\$40	\$54	\$67	\$81	\$94	\$134
\$80,000	\$15	\$31	\$46	\$62	\$77	\$92	\$107	\$154
\$90,000	\$17	\$35	\$52	\$69	\$87	\$104	\$121	\$174
\$100,000	\$19	\$38	\$58	\$77	\$96	\$115	\$144	\$192
\$200,000	\$38	\$76	\$116	\$154	\$192	\$230	\$288	\$384

Treasure - Looking Back

Fiscal Year July 1, 2004 - June 30, 2005

Total Offertory Collected: \$522,081

The following describes the nature of the primary revenue reflected within the cited categories.

- \$480,849** **First Offertory:** Money collected at each Liturgy in the designated First Collection.
- 23,664** **Christmas Collection:** Money collected at each Liturgy in the designated Christmas Collection.
- 14,479** **Easter Collection:** Money collected at each Liturgy in the designated Easter Collection.
- 3,089** **Holy Day Collections:** Monies collected for days of Holy Obligation.
 - ❖ All Saint's Day (November 1): \$ 591
 - ❖ Feast of the Immaculate Conception (December 8): \$1,339
 - ❖ Solemnity of Mary (January 1): \$1,159

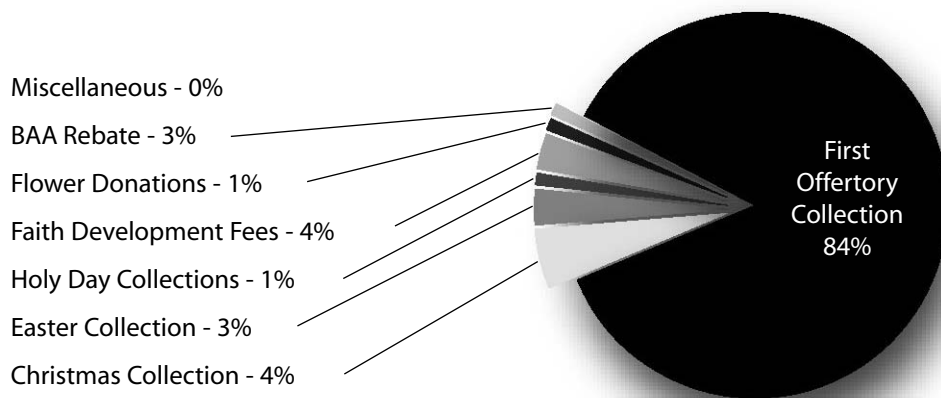
Total of Other Revenues Collected: \$48,808

The following describes the nature of the primary revenue reflected within the cited categories.

- \$24,773** **Faith Development Fees:** Fees for participation in the Faith Development programs, Adult Education Fees, Confirmation Retreat Fees, Engaged Sponsor Couple Fees.
- 4,312** **Flower Donations:** Money collected for Christmas and Easter flowers; money designated by parishioners for the use of purchasing flowers and or decorations.
- 18,493** **Bishop's Annual Appeal (BAA) Rebate:** 80% of the amount of the overage of our Parish Goal. This money goes directly into the operating revenues.
- 1,230** **Miscellaneous:** Blessed Sacrament Chapel Candle Donations, Donations collected from the Pamphlet Rack located in the atrium.

Total Offertory: \$522,081
Total of Other Revenues: \$ 48,808
Total Operating Revenue: \$570,889

All Operating Revenue in excess of operating expenses have been designated for capital improvements.



Treasure - Looking Ahead

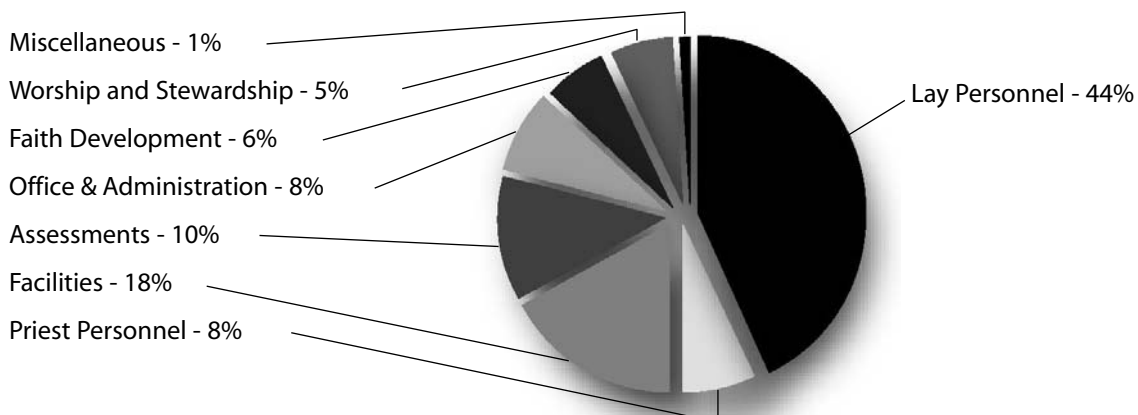
Fiscal Year July 1, 2004 - June 30, 2005

Budgeted Operating Expenses

The following describes the nature of the primary costs reflected within the cited categories:

- \$242,880** **Lay Personnel:** Lay Salaries, FICA, Medicare, Medical/Dental/Life/Disability Insurance, Lay Pensions, 403(b) Contributions, Worker's Comp, Staff Training/Development, Recruitment, Retirement, and Payroll Processing.
- 43,966** **Priest Personnel:** Priest Stipend, FICA, Medicare, Worker's Comp, Priest Training/Development, Medical/Dental/Life/Disability Insurance, Car Allocations, Visiting Clergy Stipend.
- 98,025** **Facilities (Church, Parish Center and Residence):** Property and Liability Insurance, Utilities, Telecom Systems, Internet Service, Alarm Systems, Contract Maintenance Services, Lawn Service, Equipment Repairs, Custodial Services, Residence Expenses, Home Owner's Dues, Pest Control, Maintenance/Repairs to all Buildings, Supplies, Website.
- 57,500** **Assessments:** Support of Diocesan operations (8.63% tax on previous year's first offertory collection); Parishioner's children attending Catholic Schools
 - ❖ Cardinal Gibbons High School (\$1,000.00 per child)
 - ❖ Immaculata School (\$450.00 per child); and
 - ❖ Piedmont Deanery Support (\$.50 per registered household).
- 42,300** **Office and Administrative:** Supplies, Equipment Purchases/Maintenance, Postage/ Printing/Copier Costs, Computer Maintenance/Support/Software, Data Processing Services (Automated Church Systems), Advertising, Safe Environment, Contract Maintenance, Bank Charges, Offering Envelopes, Contract Labor, Trash Pick-Up and Recycling.
- 31,650** **Faith Development:** Salesian Spirituality, General Supplies, Junior Youth Ministry/Total Youth Ministry (JYM/TYM) Supplies/Resources, JYM/TYM Chaperone and Transportation, Young Adult Formation, Rite of Christian Initiation of Adults, Retreats/Days of Reflection, Leadership Training, Adult Education, Adult Supplies/Resources, Postage/Copier Costs, Pamphlet Rack Literature, Hi-Life Program (Socials/Activities, Presenters, Supplies, Printing, Home Kits, Meals).
- 2,900** **Stewardship:** Table and Tent Rental, Printing/Copying/Postage costs, Food and Refreshments for the Stewardship Fair and Stewardship Picnic.
- 28,420** **Worship:** Music Hymnals/Sheet Music, Equipment Purchase/Repair, Postage/Copier/Printing Costs, Copyright License, Musician Contract Costs, Liturgical Faith Development, Liturgy Supplies/Resources, Flowers/Decorations, Blessed Sacrament Chapel Candles, Coffee and Supplies for after Liturgy, Name Tags, Ministers to the Sick, Postage/Copier Costs, Sacraments (First Eucharist: Tent Rental, Refreshment Cost, Postage/Copier costs, books; Confirmation: Deanery Celebration, Postage/Copier costs).
- 4,925** **Miscellaneous:** Committees and Commissions (Meals on Wheels, Peace, Justice, and Human Concerns Commission, Respect Life, Parish Pastoral Council, Parish Finance Council, Stewardship Commission, Welcoming New Parishioners, Funeral Reception Committee).

Total Operating Expenses: \$552,566



Building Fund

The Building Fund was established in March 2001 for the purpose of providing for the development of new parish facilities. The list below details history of the account.

2001 Initial deposit:.....	\$ 7,120.00
2001 Parishioner Contributions:.....	\$ 8,293.00
2002 Parishioner Contributions:.....	\$10,463.00
2003 Parishioner Contributions:.....	\$10,110.00
2004 Parishioner Contributions:.....	\$ 8,531.00
2005 Parishioner Contributions:.....	\$10,777.00
Accumulated Interest:	\$ 3,158.00

Accumulated Balance at June 30, 2005 \$58,452.00

Designated Donations

Some of the improvements to our existing facilities - furnishings, equipment, buildings, grounds and other needs - have been provided through designated donations which are not part of the operating revenues. With such donations, parishioners direct their contribution to be utilized for a specific purpose. In all cases, improvements/needs must conform to the overall parish planning guidelines applicable to the specific requests.

During the fiscal 2004-2005 year, Holy Infant received approximately \$13,260 in designated donations. We have been able to purchase items such as: liturgical vestments, altar hangings, office furniture, and music . These funds have also paid for lighting and painting in the Parish Center, hospitality room and meeting rooms. Through these donations, we have begun the process of researching and developing a website for Holy Infant. We thank all those who made these designated donations.

Total Designated Donations: \$13,260.00

Treasure

Bishop's Annual Appeal



Our Parish Goal:	\$67,370.00
Our Parish Pledged:.....	\$85,944.00
Our Parish Rebate:.....	*\$14,859.00

Through the generosity of our parish family, we are happy to announce that the 2005 Bishop's Annual Appeal at Holy Infant was a success. We have raised \$85,944.00 or 128% of our goal! This represents 372 gifts from 787 households. Your support of the Bishop's Annual Appeal sustains the vital day-to-day ministries and programs of our diocese such as Catholic Social Ministries, Hispanic Ministry, Campus Ministry, Faith Development Programs and Lay Leadership formation.

**Holy Infant will receive 80% of the amount in excess of our Parish Goal. If all 2005 pledges to the Bishop's Annual Appeal are fulfilled, our parish rebate will be \$14,859.00, which will assist with the development of Holy Infant's programs and ministries and management of financial short-falls.*

God's Work ~ Our Challenge



Our Parish Goal:	\$657,000.00
Our Parish Pledged:	\$807,695.97
Our Endowment Fund:.....	**\$36,874.79
Our Parish Development Fund:.....	***\$75,347.99

God's Work ~ Our Challenge is a major capital campaign initiated by Bishop Gossman during 2002 to raise a minimum of 30 million dollars over 5 years to address urgent capital endowment needs due to the rapid growth of our diocese. Holy Infant's parish goal for the campaign was \$657,000.00. During 2002 Holy Infant parishioners pledged \$807,695.97 or 123% of our goal. This represents gifts from approximately 32% of our households. Your support and generosity will fund endowments which will provide, among other things, outreach to the poor and marginalized, training opportunities for new pastoral leaders, training of well-formed catechists, and financial resources to purchase needed property for future Catholic churches and schools.

***The Diocese will refund 20% of the Parish Goal to Holy Infant, the proceeds of which have been designated for our Parish Case / Plan described below. If all pledges are fulfilled over the 5 year campaign, Holy Infant will receive \$131,400.00. To date, the Diocese has refunded Holy Infant \$80,710.44 for the Endowment Fund which is the money used to fund the Parish Case/Plan.*

****In addition to the 20% refund, Holy Infant will also receive 50% of the contributions in excess of our Parish Goal. If all pledges are realized, Holy Infant will receive an additional \$75,347.99 which will assist us in developing and improving our parish to meet future needs.*

Our Parish Case/Plan

Since the beginning of the campaign, our aim has been to establish a parish endowment fund. In order to maximize the amount of the endowment, we will let the endowment accumulate as annual payments are made over the next five years of the God's Work ~ Our Challenge campaign. This will result in the highest possible endowment after all pledges are fulfilled. This endowment fund is in alignment with our Parish Planning with an Evangelizing Perspective (PPEP) process. As the endowment fund grows, we will support:

1. Development and dissemination of Salesian spirituality materials.
2. Continued expansion of faith development programs and activities for all ages.
3. Training and development of lay leaders.
4. Creation of a master site plan for the Holy Infant campus.

Thank You

to all our parishioners who have given so generously to these two campaigns.

Charity and Justice Disbursements

The summary nature of the parish financial statement does not allow a specific look at the financial generosity of the parish in responding to the needs of the many people and ministries seeking our help. Holy Infant, primarily through its second collection, poor box donations and other gifts, generously seeks to respond to its charity and justice responsibilities. The information below illustrates the generosity of our parishioners for this last fiscal year, July 1, 2004 to June 30, 2005, a total of \$107,175.00.

In addition to the easily measured sacrificial gifts of money, parishioners contributed gifts of time and talent that were impossible to calculate. Some of the many ways that we, as parishioners, served others were:

- Weekly donations of canned and packaged foods from Holy Infant, distributed by Catholic Social Ministries and Baby Love.
- Gifts at Christmas from our community to over 320 needy families.
- Support of Respect Life issues and projects.
- Food preparation, donation and serving of over 1,500 meals to the Urban Ministries of Durham.
- Donations of food and labor for at least 11 work sessions for Habitat for Humanity.
- Delivering 2,500 meals (about 10 meals per day) for Meals on Wheels.

I. Yearly Donations to Agencies in Durham

Catholic Social Ministries	\$5,000.00
Durham Congregations in Action (DCIA)	3,000.00
Durham Congregations, Associations, and Neighborhoods (CAN)	500.00
Category I Total	\$8,500.00

II. Special Designated Collections

Through these special collections, we joined Catholics throughout the U.S. in supporting ministries at home and abroad.

African & Native Americans	1,850.00
Bishop's Annual Overseas Appeal	2,200.00
Campaign for Human Development	2,250.00
Catholic Communications	1,800.00
Catholic Home Mission	1,900.00
Catholic University of America	1,350.00
Eastern Europe	2,900.00
Holy Father/Peter's Pence	2,260.00
Holy Land Shrines	1,400.00
Catholic Relief Fund	3,050.00
Latin American Missions	1,650.00
NC Food Bank	782.00
Oblates of St. Francis de Sales Annual Appeal	10,000.00
Oblates of St. Francis de Sales (Indian Missions)	1,000.00
Priests' Welfare and Retirement	21,432.00
Propagation of Faith	1,650.00
Retirement Fund for Religious	3,200.00
Rice Bowls	1,100.00
Tsunami Relief	13,300.00
World Mission Sunday (Oblates of St. Francis de Sales)	6,000.00
Category II Total	\$81,074.00

III. Assistance Given to Parishioners/Individuals

Category III Total	\$1,546.00
---------------------------------	-------------------

Treasure

“As Christian stewards we receive God’s gifts gratefully, cultivate them responsibly, share them lovingly in justice with others, and return them with increase to the Lord.”

IV. Donations Given to Charitable Organizations

Aids Community Residence Association	250.00
Bread for the World	250.00
Catholic Social Ministries (Coats for Kids)	250.00
Covenant House	50.00
Crop Walk	3,000.00
Cross International (Hurricane Relief)	1,000.00
De Sales Publishing	200.00
De Sales Service Works	250.00
Duke Cancer Patient Support	100.00
Eva’s Village	50.00
Fans for the Needy	318.00
For Kids Sake, Inc.	100.00
Franciscan Brothers of Peace	50.00
Genesis Home	100.00
Habitat for Humanity	500.00
Knights of Columbus	450.00
Liturgical Publications/Catholic Social Ministries	400.00
Make A Wish Foundation	100.00
March of Dimes	200.00
Meals On Wheels	200.00
National Federation of Priest Councils	100.00
Nativity School, Wilmington, Delaware	3,000.00
NC Right to Life	300.00
NPM	100.00
New Directions for Downtown	1,600.00
Paulist National Catholic Evangelical Association	100.00
Positive Promotions	32.00
Pregnancy Support Services	200.00
Ronald McDonald House	120.00
Salvation Army	100.00
Samaritans Purse	200.00
Student Action for Farmworkers	100.00
The ARC of Durham	395.00
Urban Ministries of Durham	250.00
USCCB Publishing (Respect Life)	44.00
Westin Jesuit School	100.00
Category IV Total	\$14,559.00

Total Received **\$102,604.00**

Total Distributed by Holy Infant **\$105,679.00**

(Parishioner donations mailed directly to the Annual Appeal)

(Parishioner donations made directly to the Crop Walk)

Grand Total Distributed **\$107,175.00**

Those whom we serve are very grateful to us for our support and generosity.

Successes & Objectives

of our six commissions

Our parish vision statement charges us to be stewards of God's gifts and effective evangelists in today's world. Six commissions support our parish faith community. Please reflect and pray over the following pages. Note the successes and objectives of the commissions and consider how you will become involved. All parishioners are challenged to give time, talent and treasure to the parish.

Stewardship Commission - Chair: Marshall Robers - 401-5872

To make Holy Infant the most vibrant community it can be, all members must embrace Stewardship. Openness to Stewardship allows us, with faith and gratitude, to know in our hearts that all that we have is a gift from God and to consistently and willingly share all those gifts. Giving freely of Time, Talent, and Treasure defines who we are and is a necessary role for everyone in our faith community.

The Stewardship Commission hosts events to welcome new members to our parish community, partners with the Finance Council to encourage sharing of treasure, and encourages all parishioners to become involved in the ministries, councils, committees and/or programs that make our parish vibrant.

2004-2005 Successes:

- Planned and hosted four successful welcome socials for new parishioners.
- Worked with the Parish Pastoral Council to plan reorganization of the Stewardship Commission.
- Worked with the parish team to host a Stewardship Fair on Pentecost weekend.
- Exceeded parish goal for the Bishop's Annual Appeal by 10%.

2005-2006 Objectives:

- Partner with the Finance Council to publicize and promote consistent and increased giving, particularly through use of electronic funds transfer.
- Reorganize the Commission with input from the Parish Pastoral Council by June 2006.
- Organize and execute a BAA campaign that meets parish and diocesan fund raising goals.
- Partner with other commissions to determine required stewardship needs.
- Promote further stewardship of Time and Talent via the bulletin and specifically designated commission appeal weekends.

Faith Development Commission - Chair: Carol Owen - 544-2121

The Faith Development Commission helps to discern the faith development needs of Holy Infant parishioners at all stages of faith life. It helps set goals and objectives to insure this. The purview of this commission is the Rite of the Christian Initiation of Adults (RCIA), all sacramental preparation, and the faith formation of all members of Holy Infant community at every stage of Christian life.

2004-2005 Successes:

- Developed the multi-year curriculum and Annual HI-life Learning Plan.
- Held seven monthly intergenerational HI-life gatherings, which were repeated three times during one week of the month, to prepare for a season or celebration of the church year. Our focus this year was on the Church Year.
- Provided HI-life at Home Kits to equip and encourage households to continue to pray, reflect, and learn at home.
- Recruited and trained the catechetical "GIFT" team (Gathering and Implementation Team).
- Provided safe environment training for catechists and had a safe environment monitor identified for all faith formation gatherings.
- Promoted involvement of adults in HI-life and lifelong faith formation.
- Provided parent and child faith formation activities during the HI-life gatherings.
- Promoted youth participation in monthly HI-life gatherings.
- Continued strong commitment to spirituality, particularly Salesian spirituality.
- Increased participation in summer mission trip from 4 to 9 TYM youth.

2005-2006 Objectives:

- Conduct HI-life gatherings focusing on the Sacramental Life of the Church: Baptism, Funeral Rite, Reconciliation, Sacraments of Vocation, Anointing of the Sick, Eucharist, and Confirmation.
- Conduct a series on Eucharist & Liturgy for elementary-age children and adults.
- Create a connection among those preparing for sacraments of initiation (esp. Reconciliation, Eucharist, Confirmation, and RCIA).
- Enhance the connection between the parish community and Baptism preparation and celebration.
- Grow, both in faith and membership, the young adult group at Holy Infant through participation in monthly young adult meetings, Bible study, and HI-life.
- Network with other Parish ministries to ensure a comprehensive approach that enables the parish to be a learning community.
- Increase parish participation in HI-life from 20% - 25% of households.
- Expand offerings for adult faith development.
- Add pre-school component to one HI-life gathering each month.
- Encourage use of HI-life home kit resources.

Liturgical Commission - *Chair: Mary Russell - 490-5229*

The Holy Infant Catholic Community celebrates the weekly Eucharistic Liturgy as the source and summit of its Christian life. Every member is encouraged to take their proper ministerial role in this assembly. We also wish to create a welcoming spirit among parishioners by developing an atmosphere of hospitality before, during and after each liturgy by forming good liturgical ministers, offering quality liturgical music and by promoting full, active and conscious participation among all members.

2004-2005 Successes:

- Successful and joyful Triduum with full participation by all liturgical ministries.
- Recruited a new chair for this Commission.
- Recruited a new lector coordinator.
- Recruited and trained one youth lector, one Eucharistic Minister to the Sick & Homebound, thirteen Eucharistic Ministers of the Table, five Altar Attendants, two Hosts, five Music Ministers and several new greeters.
- Provided music for all liturgies during the 2004/2005 liturgical year including introducing new music to the community.
- Many Music Ministers greatly improved musical skills and gained confidence.

2005-2006 Objectives:

- Review and update job descriptions/expectations, functions, and contacts/relevant personnel for Ministry members to accomplish duties.
- Hold one Liturgical Formation event for all Liturgical Ministers.
- Develop a succession plan for all Liturgical Ministries.
- Develop a scheduling plan for important Liturgical events where recruitment has proven difficult.
- Continue to encourage accountability among ministers by setting the expectation that ministers will identify a substitute when unable to serve.
- Assist in the organization of a Liturgical Recruitment Weekend to recruit more liturgical ministers.
- Continue the development/growth of the Music Ministry as well as the Parish repertoire by successful completion of the ministry objectives.
- Consider a plan of rotating mandatory service for the Triduum to improve lector ministry participation.

Peace, Justice & Human Concerns Commission - *Chair: Fran Hamacher - 484-0696*

The Peace, Justice and Human Concerns Commission works to promote the awareness of social justice issues. It seeks to publicize opportunities for outreach activities, provide educational materials and make suggestions to the pastor concerning the disbursement of Charity and Justice Funds.

2004-2005 Successes:

- Increased parish participation in Urban Ministries of Durham dinners.
- Revamped Share Your Christmas program in order to allow for affordable gifts to be purchased by the parish. Enlisted Spanish-speaking parishioner to aid with the program.
- Coordinated activities with Catholic Social Ministries and Pregnancy Support Services. Provided the parish with specific needs for each of these ministries.

2005-2006 Objectives:

- Recruit a co-chair for this commission.
- Focus attention on one particular ministry for the upcoming year.
- Continue to increase our participation in the Food Pantry by working with Catholic Social Ministries and Baby Love.
- Explore new ideas for Share Your Christmas in order to ensure greater participation by the parish.

Parish Life Commission - *Chair: TBA*

We are continually being challenged as a faith community in our ministry to one another. The Parish Life Commission seeks to promote involvement and participation by our parishioners in the ministries and activities of our faith community.

2004-2005 Successes:

- Provided food for new parishioner welcoming gatherings, intergenerational events, and the Easter Vigil.
- Celebrated a parish wide party during the month of February called "Beat the Blues" night at Baileys.
- Created a new position of playground/maintenance coordinator.
- Staffed the nursery during the Saturday HI-life gatherings.

2005-2006 Objectives:

- Recruit a commission chair.
- Plan two parish wide socials. One in the fall and one in the spring.
- Recruit and train a new coordinator for the nursery coop.

Facilities Commission - *Chair: John Archibald - 489-8864*

The commission has identified the present need of our faith community in addressing the issue of space both now and for the future of Holy Infant. Our parish community needs to be well grounded in a contemporary understanding of Church in all its dimensions since this affects liturgy, architecture, art and environment as well as the constrictions of our present space.

2004-2005 Successes:

- Completed preliminary evaluation of current space needs and presented findings to Parish Council.
- Secured quotes for short-term required improvements to existing parish space, and presented to Parish Finance Council.
- Met with Diocesan Building Advisor to gather advice on expanding current space, or building new facility.
- Consulted with architecture firm, George Yu, of Philadelphia, who designed the proposal for new facilities in 1991.

2005-2006 Objectives:

- Review and update job descriptions/expectations, functions, and contact/relevant personnel for Ministry members to accomplish duties.
- Develop a succession plan.
- Formulate a space plan that will address current and future space needs.
- Work closely with the existing Maintenance Committee.
- Secure the necessary funds for a professional evaluation concerning renovation or expansion of existing space.
- Make a final proposal to Parish Pastoral Council.

Commissions

Stewardship Commission

- Bishop's Annual Appeal (BAA)
- Hospitality Committee
- Office Volunteers
- Welcoming New Parishioners

Faith Development Commission

HI-life Faith Development

- HI-life Faith Development Process
- HI-life Gatherings & Intergenerational Events

Faith Development of Adults

- Adult Learning Opportunities
- Retreats / Reflection Days
- Salesian Spirituality
- Landings for Returning Catholics
- Young Adult Ministry

Faith Development of Youth & Children

- Faith Development of Youth – TYM (high school)
- Faith Development of Youth – JYM (middle school)
- Faith Development of Children

Sacrament Preparation

- Baptism Preparation
- First Reconciliation Preparation
- First Eucharist Preparation
- Confirmation Preparation
- Rite of Christian Initiation of Adults (RCIA)
- Marriage Preparation - Sponsor Couples

Liturgical Commission

- Liturgical Ministry Scheduling
- Liturgy Action Committee (LAC)
- Art & Environment
- Altar Attendants
- Altar Bread Bakers
- Altar Linen Caretakers
- Eucharistic Ministers to the Sick
- Eucharistic Ministers of the Table
- Greeters
- Hosts
- Lectors
- Music Ministry

Peace, Justice & Human Concerns Commission

- CFOP Walk
- Food Pantry
- Habitat for Humanity
- Meals on Wheels
- Respect Life Committee
- Share Your Christmas
- Urban Ministries of Durham Dinners

Parish Life Commission

- Funeral Reception Committee
- Mother's Morning Out
- Nursery Co-Op

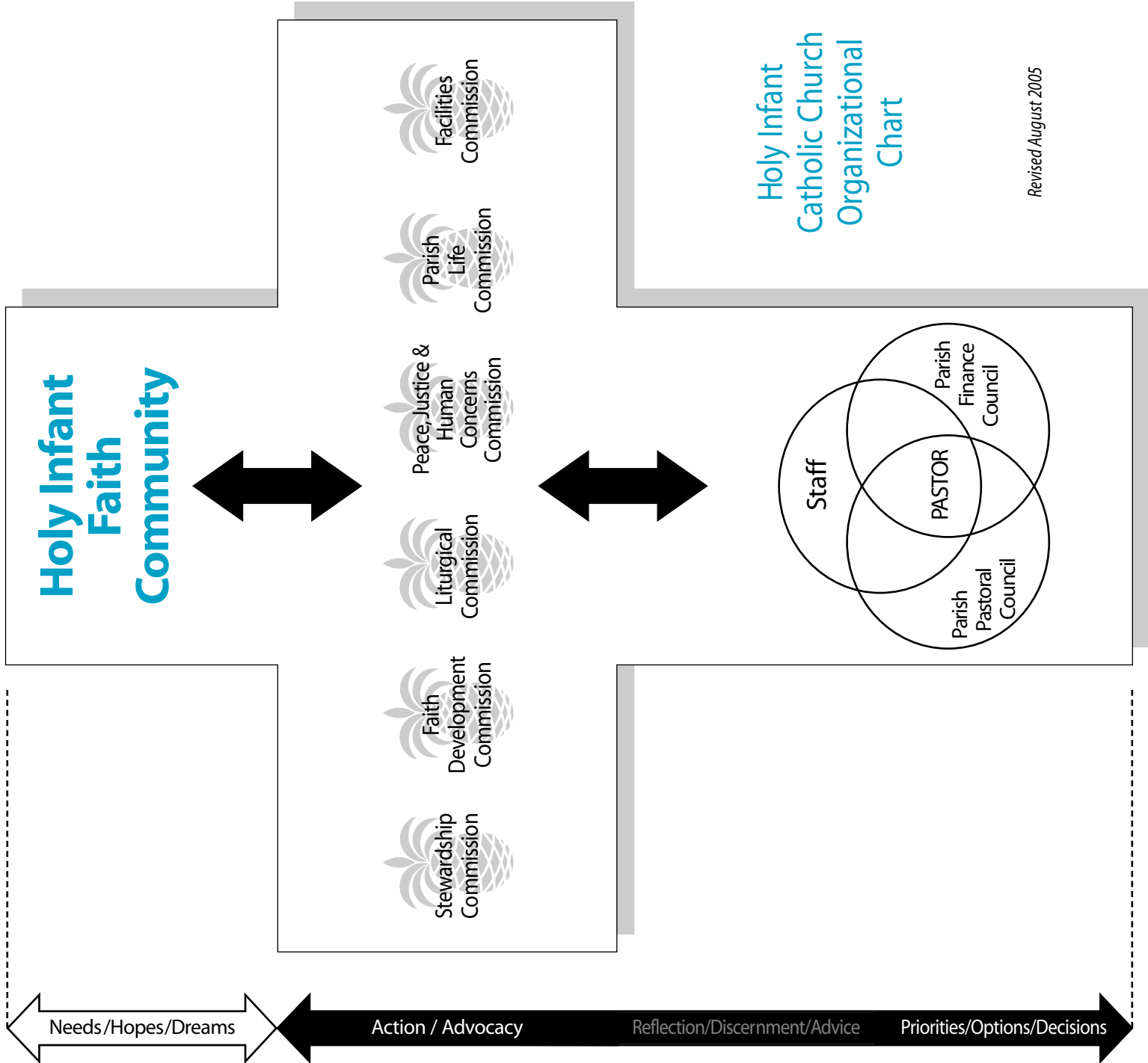
Prayer Life

- Centering Prayer
- Children of Light
- Prayer Network
- Servants of God Prayer Group

Facilities Commission

- Maintenance Committee
- Space Committee

Collection Counters under the jurisdiction of the Finance Council



Pastoral Resources and Parish Coordinators/Contacts/Chairs

Parish Center -- Phone: 919-544-7135 • Fax: 919-544-1799

<u>Name</u>	<u>Title</u>	<u>Ext.</u>
Lynda Dean	Administrative Assistant	10
Jeanine Henry	Bulletin Editor	33
Tammy Hoover	Bookkeeper	17
Randy Januchowski	Staff Assistant	21
Tom Mack	Deacon	36
Tom Mazzeo	Maintenance	35
John McGee, OSFS, VF	Pastor, Dean of Piedmont Deanery	23
Cathy & Bob Potchak	Office Assistants	
John Jemsek	Liturgical Ministry Scheduler	34
Lynn Sale	Director of Faith Development and Piedmont Deanery Faith Development Coordinator	18
Ruth Seeber	Staff Assistant	32
Peggy Stevermer	Director of Music Ministry	20

Council

<u>Coordinator/Chair</u>	<u>Phone</u>
Parish Pastoral Council Chair Keith Anthony	919-596-9007
Parish Finance Council Chair Blaine Short	919-493-7074

Weekly Collections

Collection Counters Tammy Hoover	919-544-7135
-------------------------------------	--------------

Stewardship Commission

Stewardship Commission Chair Marshall Robers	919-401-5872
Bishop's Annual Appeal Chair (BAA) Donna Ryan	919-493-1212
Hospitality Committee Lynn Poole	919-489-7052
Office Volunteers Lynda Dean	919-544-7135
Welcoming New Parishioners Brian & Roberta Brave	919-544-0753

Faith Development Commission

Faith Development Commission Chair Carol Owen	919-544-2121
--------------------------------------------------	--------------

HI-life Faith Development

HI-life Faith Development Process Lynn Sale	919-544-7135
HI-life Gatherings & Intergenerational Events Bill Fitzgerald	919-303-5423

Faith Development of Adults

Adult Learning Opportunities Lynn Sale	919-544-7135
Retreats / Reflection Days Lynn Sale	919-544-7135
Salesian Spirituality Lynn Sale	919-544-7135
Landings for Returning Catholics Lynn Sale	919-544-7135
Young Adult Ministry TBA	

Faith Development of Youth & Children

Faith Development of Youth – TYM (high school) Joan Novak	919-493-1774
Faith Development of Youth – JYM (middle school) TBA	
Faith Development of Children TBA	

Sacrament Preparation

Baptism Preparation Tracy Gentry	919-361-9593
First Reconciliation Preparation TBA	
First Eucharist Preparation Diane Gerding	919-544-3645
Confirmation Preparation Eileen Duryea	919-489-3772
Rite of Christian Initiation of Adults (RCIA) Carol Owen	919-544-2121
Chris Smith	919-544-6947
Joan Holland	919-933-8405
Patti Holland	919-933-8405
Amber Kleindienst	919-680-3953
Marriage Preparation - Sponsor Couples Paul & Maria Feldman	919-489-2869

Liturgical Commission

Liturgical Commission Chair Mary Russell	919-490-5229
Liturgy Ministry Scheduling John Jemsek	919-544-0586
Liturgy Action Committee (LAC) Tad Kleindienst	919-544-1040
Art & Environment Committee Ruth Seeber	919-489-6278
Altar Attendants Justin Panza	919-484-2216
Altar Bread Bakers Roberta Brave	919-544-0753
Altar Linen Caretakers Pat McGinn	919-544-2898
Eucharistic Ministers to the Sick/Homebound Tom Mack	919-387-0861
Eucharistic Ministers of the Table Jim McBride	919-544-1253
Greeters Trish Moorman	919-419-9301
Hosts Rick Auten	919-408-0004
Lectors Cindy Vittitow	919-544-6565
Music Ministers Peggy Stevermer	919-544-7135

Peace, Justice & Human Concerns Commission

PJHC Commission Chair Fran Hamacher	919-484-0696
CROP Walk Mark Saulter	919-572-0571
Food Pantry Grace Keller	919-361-1239
Alice McAndrew	919-361-9004
Habitat for Humanity Kathy Bartlett	919-682-3288
Meals on Wheels Debbie Cornell	919-361-9859
Respect Life Committee Diane Gerding	919-544-3645
Share Your Christmas Committee Robin Bolte	919-572-2995
Urban Ministries of Durham Dinners Deb Lewis	919-544-6566
Betty Silvia	919-403-7047
Gail Spiridigliozzi	919-544-5665

Parish Life Commission

Parish Life Commission Chair TBA	
Funeral Reception Committee Pat McGinn	919-544-2898
Mother's Morning Out Chrissie Merdes	919-544-2266
Bernadette Labriola	919-544-5631
Nursery Co-op (8:30am) Rob & Jodi Fitch	919-572-8994

Prayer Life

Centering Prayer Group Susan Modrak	919-489-5592
Children of Light Prayer Group Eileen Yuengling	919-490-8050
Prayer Network Betty Hirschauer	919-489-7941
Servants of God Prayer Group Teresa Isidro	919-544-9441

Facilities Commission

Facilities Commission Chair John Archibald	919-489-8864
Maintenance Committee Tom Mazzeo	919-490-0671
Space Committee John Archibald	919-489-8864



Holy Infant Catholic Church

5000 Southpark Drive
Durham, North Carolina 27713-9470
Phone: (919) 544-7135
Fax: (919) 544-1799

Time
Talent
Treasure

Stewardship -- A Way of Life

*Holy Infant
Catholic Church*

July 1, 2004 – June 30, 2005